

US-3000

PalmSmart Ultrasound Scanner

The revolution in idea

Clinical applications

- abdominal
- obstetrical/gynecologist
- Fetal
- Pediatric
- Endovaginal
- Endorectal
- Veterinary

Power Supply

- AC adapter (110V/230V)
- Battery can keep the system working for 2h continuously, 4~5h for stand-by
- Battery is internal and re-chargeable
- Battery can be charged by a car charger



Metallic case for easily carrying

The scanner is kept in a aluminium case, which is small and lightweight, therefore it is easy carrying and storing to or at any place.

Features

- excellent image quality
- 6.4 TFT color LCD
- multi-frequency facility
- 4-step magnification possible
- easy-to-use controls and menus
- full veterinary software

Light Weight

- net weight: 2.4KG
- weight with metallic case: 5.6KG

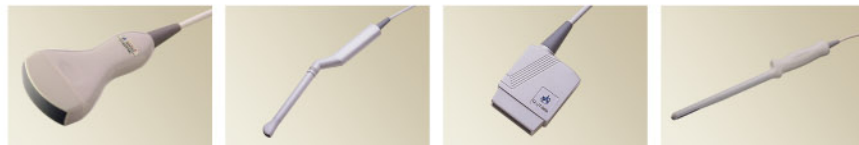


Specifications

- Scanning Method: Convex, Linear triple-frequency with wide band.
- Display Mode: B, B+B, B+M, M
- Gray Scale: 256 levels
- Monitor: 10.4" TFT color LCD
- Image Procession: DFS, DRF, RDA, VGA/DSC and Image Post Procession
- 206 frames for cine-memory
- Image magnification in four levels: X1.0, X1.2, X1.5, X2.0 times
- Multi-step Zoom (1:2) is available in both real-time and frozen modes
- 4 focusing combination selectable
- Depth Shift is available in real-time in B and B+B mode
- Image Conversion in U/D, L/R and B/W.
- 8 difference coded-color available on a external color monitor
- 15 difference kinds of body marks with difference calipers.
- Measurement in Distance, Circumference/Area, Time/Heart Rate/EF rate for heart, and GS, CRL, BPD, HC, FL, AC for OB/GY measurement, and Gestational Age, Fetal weight, EDD calculation.
- Characteristic showing in real-time clock, ID, Sex, Age, Focusing Info and Hospital Name.

Probes for Human Use

- R60/3.5MHz Convex
- L40/7.5MHz Linear
- R13/6.5MHz Transvaginal Convex
- L40/7.5MHz Endorectal Linear



For Vet Use

- R40/3.5MHz Convex
- L60/7.5MHz Rectal Linear
- R20/5.0MHz Micro-convex
- L40/7.5MHz Linear
- L40/7.5MHz Endorectal Linear

Shenyang zhongdazhong Medical Equipment Co., LTD.

Address: Jiaxing International Building, NO.146, Beizhan Road, Shenhe District, Shenyang city, P.B. China

Tel: 86-24-88612005 / 88612006

Fax: 86-24-22512298

E-Mail: zdzmed@hotmail.com

Website: www.medicalinchina.com